



Lightweight, Coolmax moisture wicking internal environment and 09 stadium ready graphics.

The result is a fully specced out shell, complimented by a liner that showcases Du Pont's latest Coolmax.

Ready to battle to the top step of the block, choose your weapon... Retro or Recoil.

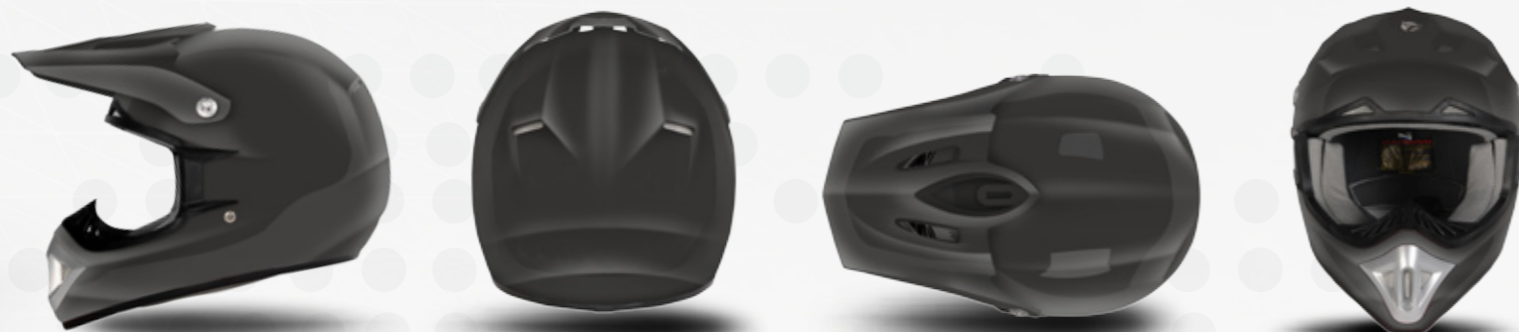
SHELL

# 608-MX

FIBERGLASS MOTOCROSS HELMET

SPECIFICATION

- 01 SHELL DESIGN OPTIMISED FOR REDUCED WEIGHT, AIR CIRCULATION AND FILTRATION
- 02 FIBRE MIX SHELL PROVIDES LIGHTWEIGHT WHILST OFFERING EXCELLENT PROTECTION
- 03 TWIN EXHAUST VENTS INTEGRATED IN SHELL CONSTRUCTION WITH WIRE MESH SCREENS
- 04 WIDE EYE PORT AIDS PERIPHERAL VISION - KEEP THE COMPETITION IN CHECK
- 05 FULLY REMOVABLE AND WASHABLE LINER SYSTEM SHOWCASING COOLMAX BY DUPONT
- 06 REINFORCED CHINBAR, WITH INTEGRATED MOUTHGUARD/DUST FILTER
- 07 PRE MOULDED POLYMER NOSE WRAP DESIGNED TO KEEP ROOST OFF YOUR FACE
- 08 TWIN INTAKES AT FOREHEAD INTEGRATED IN APERTURE TRIM WITH WIRE MESH FILTRATION SCREENS
- 09 CUSTOMIZABLE CHEEKPADS, CROWN AND LINER
- 10 DOUBLE D BUCKLE ALLOWING FOR SECURE FITMENT EVERY RIDE
- 11 ANATOMIC LUXURY FITTED CHEEKPADS AND COMFORT LINING
- 12 FULLY ADJUSTABLE PEAK WITH ALUMINUM MOUNTS



12 FULLY ADJUSTABLE PEAK WITH ALUMINIUM MOUNTS

01 SHELL DESIGN OPTIMISED FOR REDUCED WEIGHT, AIR CIRCULATION AND FILTRATION

03 TWIN EXHAUST VENTS INTEGRATED IN SHELL CONSTRUCTION WITH WIRE MESH SCREENS

08 TWIN INTAKES AT FOREHEAD INTEGRATED IN APERTURE TRIM WITH WIRE MESH FILTRATION SCREENS

03 TWIN EXHAUST VENTS INTEGRATED IN SHELL CONSTRUCTION WITH WIRE MESH SCREENS

07 PRE MOULDED POLYMER NOSE WRAP DESIGNED TO KEEP ROOST OFF YOU FACE

05 FULLY REMOVABLE AND WASHABLE LINER SYSTEM SHOWCASING COOLMAX BY DUPONT

06 REINFORCED CHINBAR, WITH INTEGRATED MOUTHGUARD/DUST FILTER

